

Build a *covered wagon*!

Instructions:

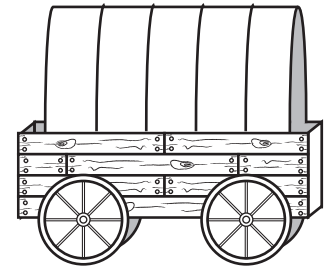
1. Color the **panels**, **cover**, and **wheels** of the wagon.
2. Cut all pieces out along solid lines. Crease along dotted lines.
3. Glue tabs on **wagon base** to wagon sides as directed.
4. Glue tabs on **cover** to **wagon base** as directed.
5. Glue **panels** to sides of **wagon base**.
5. Finally, glue **wheels** to sides of **panels**.

Bonus activity:

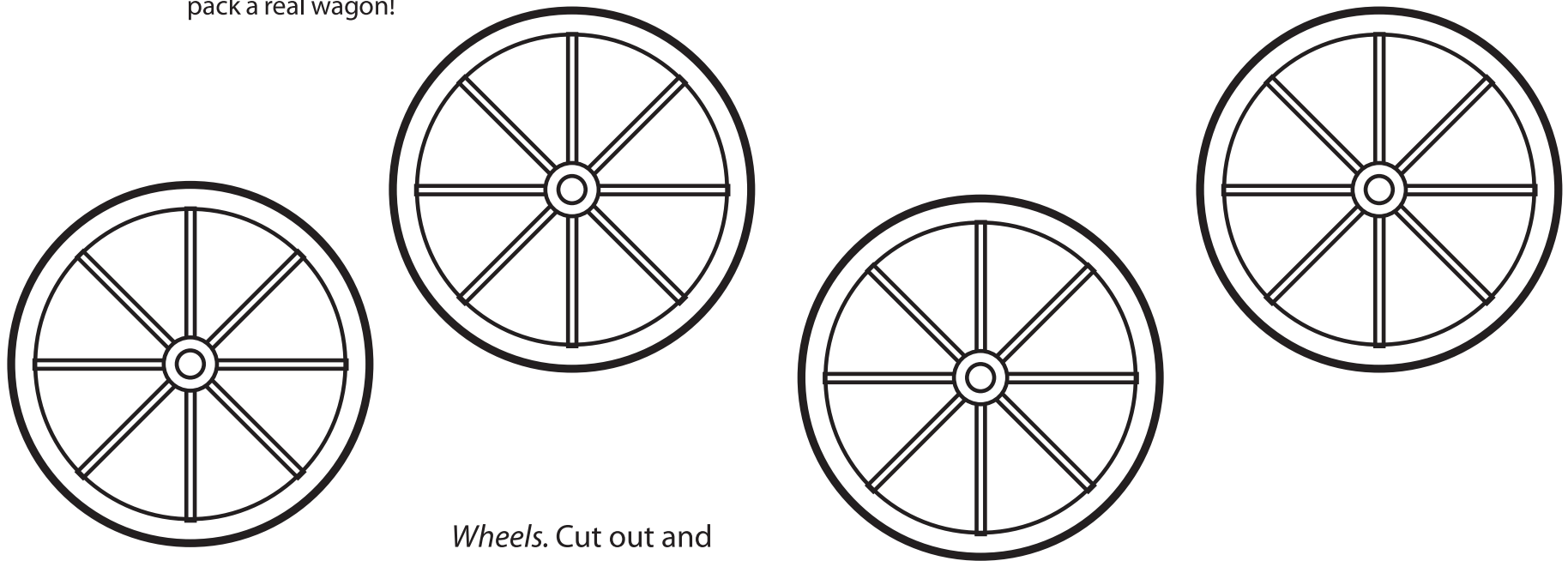
How much weight can your wagon carry?

The pioneers had to pack carefully for their long trip. They needed enough food, milk, and supplies for the long trip, but they had to be careful not to overload the wagon. See how many pennies, paper clips, or building blocks you can put in the wagon before its wheels begin to bend. Imagine how difficult it must have been to pack a real wagon!

Note: Works best when printed on card stock or other thick paper!

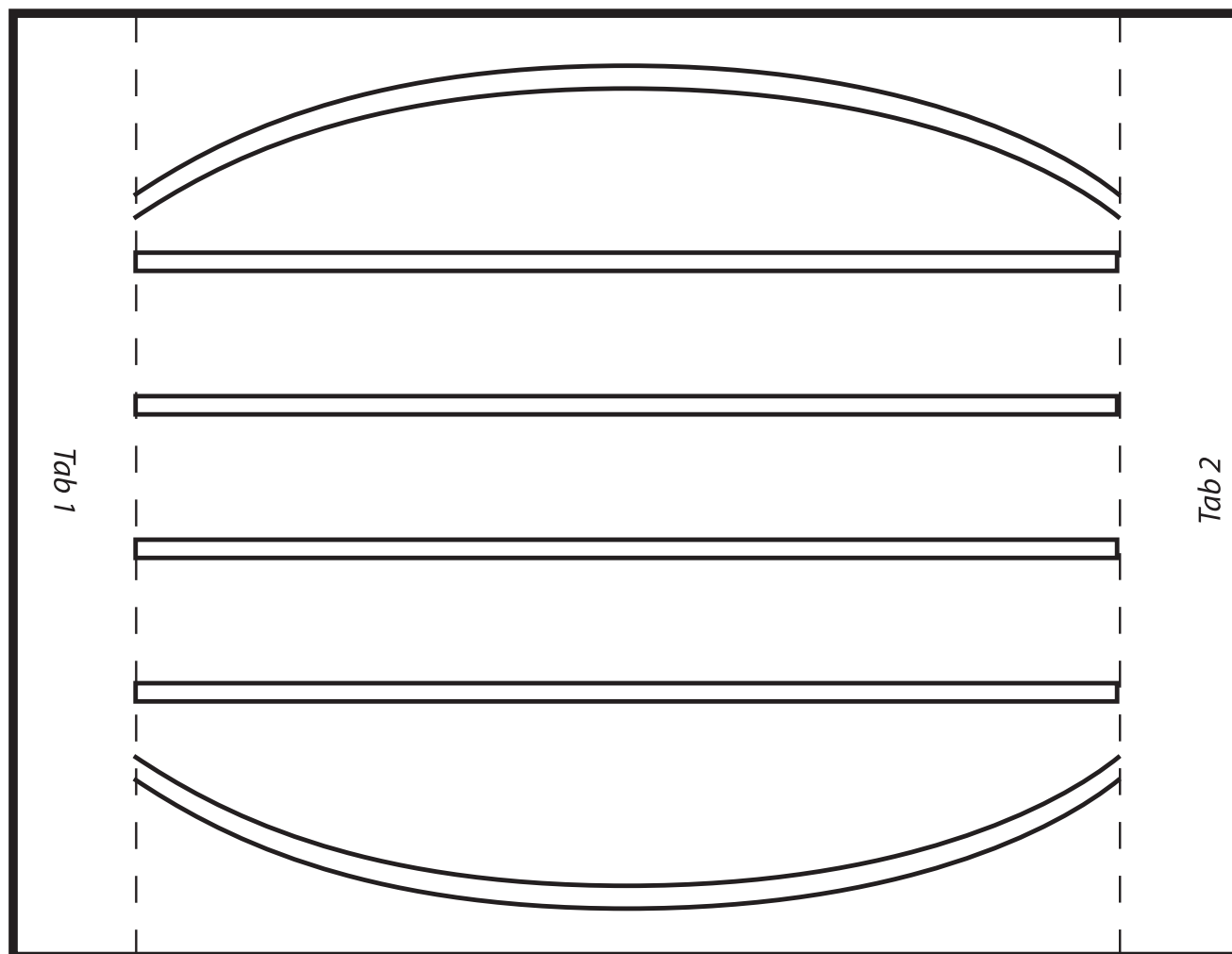


Your finished wagon will look like this.

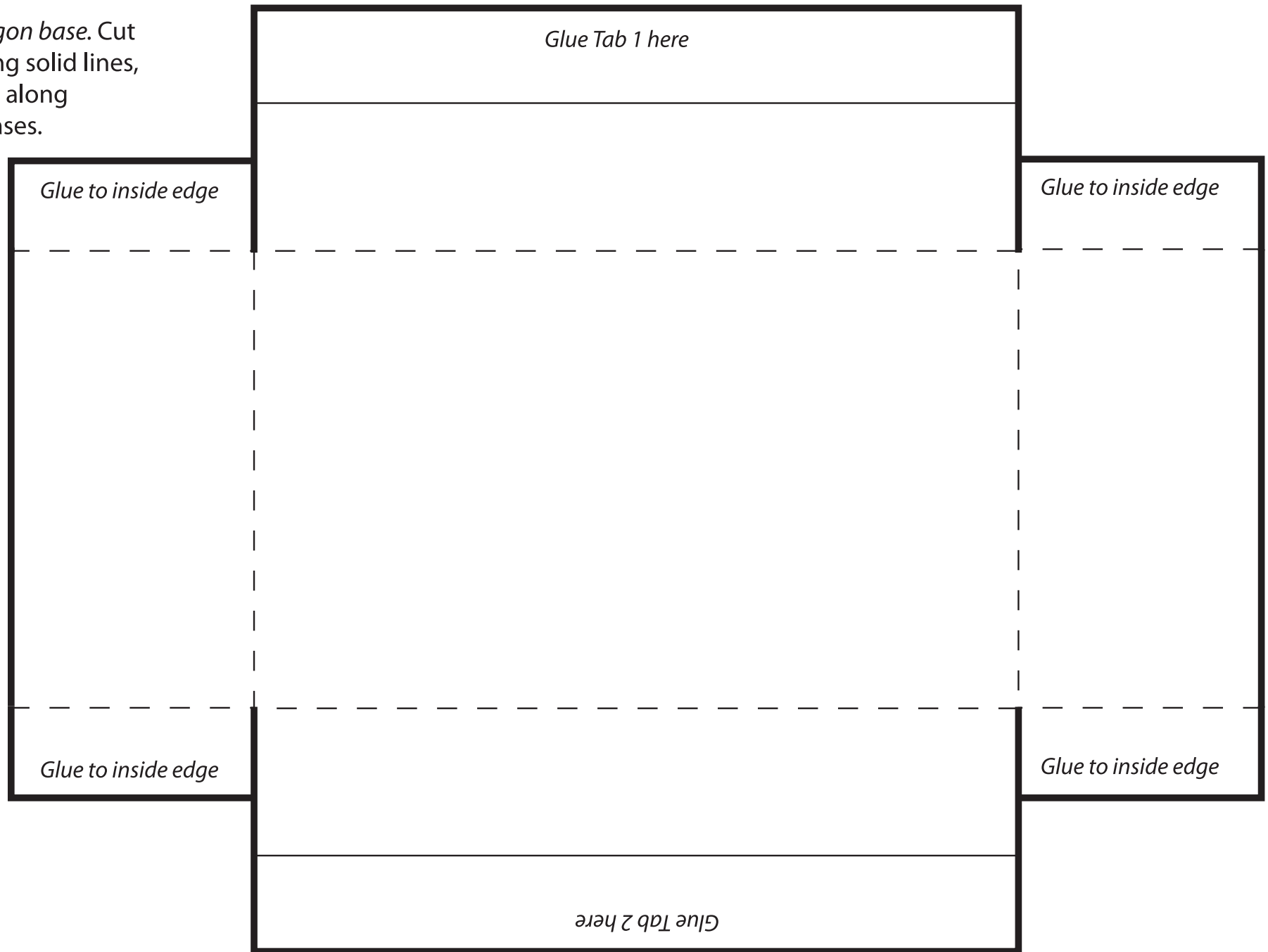


Wheels. Cut out and glue to panels where labeled.

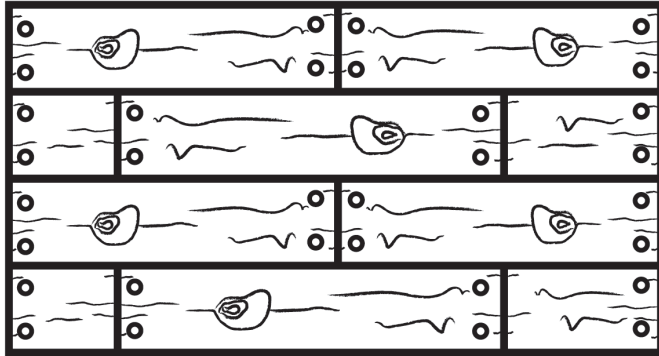
Cover. Cut out and paste tabs to corresponding spaces on the wagon.



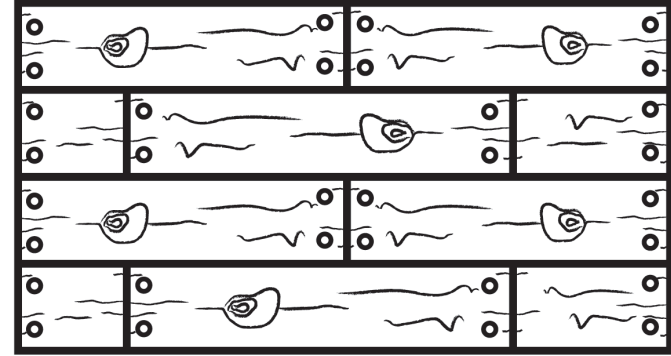
Wagon base. Cut
along solid lines,
fold along
creases.



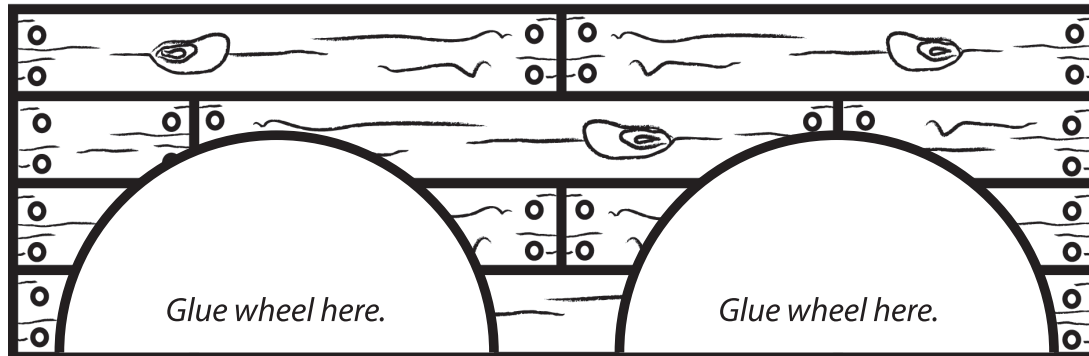
Panels. Cut out and paste to sides of wagon base as directed.



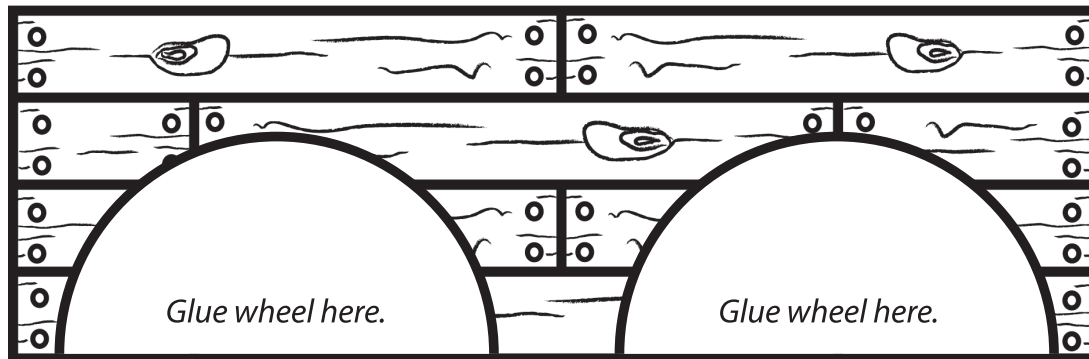
Paste to front of wagon.



Paste to back of wagon.



Paste to one side of wagon.



Paste to other side of wagon.